

WinTV-soloHD WinTV-dualHD

Quick Installation Guide for Windows

Contents of the package

- WinTV-soloHD or WinTV-dualHD DVB-T2/T/C receiver
- USB extension cable
- Portable TV antenna (on some models)
- Remote control
- WinTV v10 application for Windows (download with included Activation Code)

Installation of the WinTV-soloHD / WinTV-dualHD device

Locate a free USB 2.0/3.0 port (normally located at the side or back on the laptop or desktop). Plug the WinTV-soloHD / WinTV-dualHD into the USB 2.0/3.0 port. The **USB extension cable** can be used to position the WinTV-soloHD / WinTV-dualHD away from your USB slot.

Note: we do not recommend connecting via a USB Hub.

1

Note: the WinTV-soloHD / WinTV-dualHD will work with both USB 2.0 and USB 3.0 ports.

Digital Terrestrial TV

The WinTV-soloHD / dualHD can receive DVB-T and DVB-T2 broadcasts from an antenna.

Plug an antenna for DVB-T2 (FreeviewHD) or DVB-T (Freeview) TV reception into the TV connector on WinTV-soloHD / WinTV-dualHD.

Note: When using FreeviewHD DVB-T2, it is recommended to connect to a roof top aerial during the first time installation. This will provide better signal quality than a portable antenna.

Cable TV

On a cable TV feed, the WinTV-soloHD / dualHD can receive digital TV and radio programs (DVB-C).

Connect the TV output on the cable TV socket to the TV input on the WinTV stick, using a high quality coax cable (not supplied).



2

Installing the WinTV v10 application for Windows

Note: Please disable your antivirus software for the duration of the software installation. We find that sometimes antivirus apps block the temporary folders needed for the installation of WinTV

Note: An Internet connection is required for download and software activation.

You will find the website and directions on the **WinTV v10 Download and Activation code** card along with the **Activation code** for WinTV v10.

The WinTV v10 download can be found here:

www.hauppauge.com/wint10

Step 1:

Download the WinTV v10 installer by clicking the download button. The WinTV v10 Installer is normally saved in your **Download folder**

Step 2:

Run **wintv10setup** from the Download folder on your PC. Halfway through the installation, a message will pop up asking for you to enter the Activation Code.

Step 3:

At the **Activation required** screen,



3

click on **Enter Activation code** and enter the activation code which was printed on the **WinTV v10 Download and Activation code** card. You do not need to enter the dashes, and you can use upper or lower case characters.

Step 4:

When the installation is complete, you will find two new icons on your Windows desktop: the **WinTV application** icon and the **WinTV Advanced Options** icon. The WinTV Advanced Options icon, when clicked, has a number of useful WinTV v10 utilities such as to Empty EPG, Erase channel database and others.

Double click on the **WinTV icon** and the WinTV application will run. **On the first run of WinTV, it will automatically go through the TV source selection and WinTV will scan for channels.**

Set the check mark according to the connected signal and click **Next**.



1

Click **Next** to start the search.

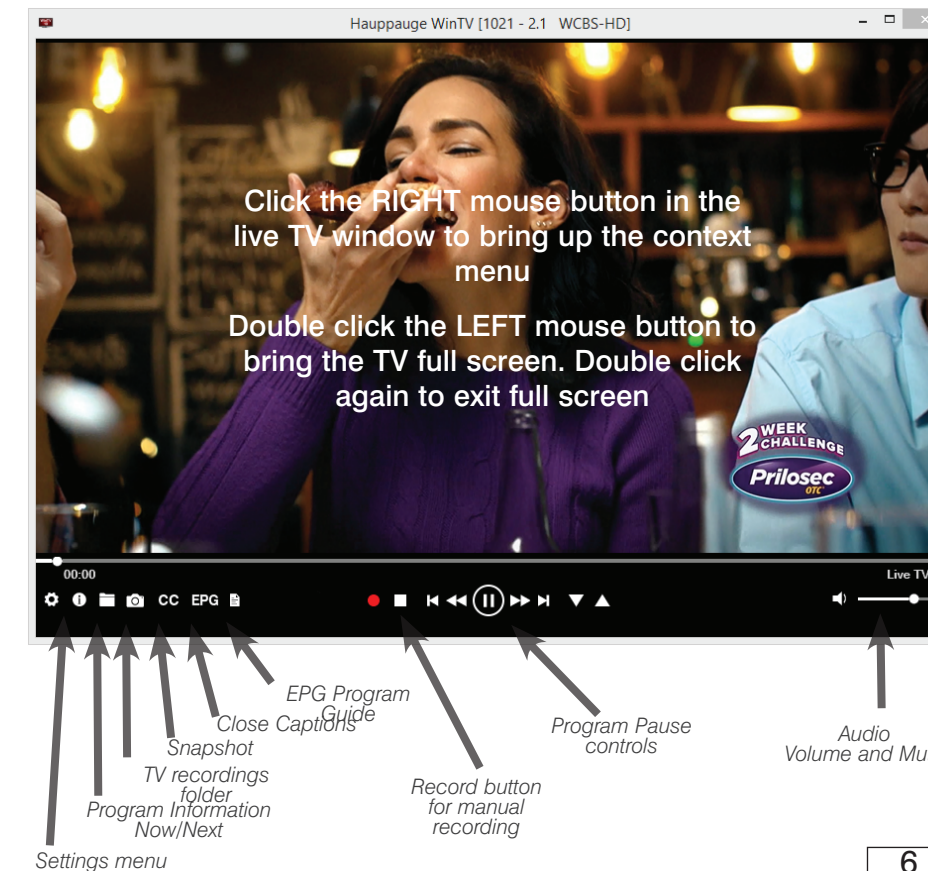
Stations found are listed during the search.

When the search is complete, click **Next** to save the channels found.

Note: if you complete the channel scan and no channels are detected, you can try the following: check your antenna connections, reposition your antenna, add an antenna signal booster, or get a larger antenna. Information on rescanning for TV channels can be found here: www.hauppauge.com/rescan

2

Using the WinTV v10 application



6



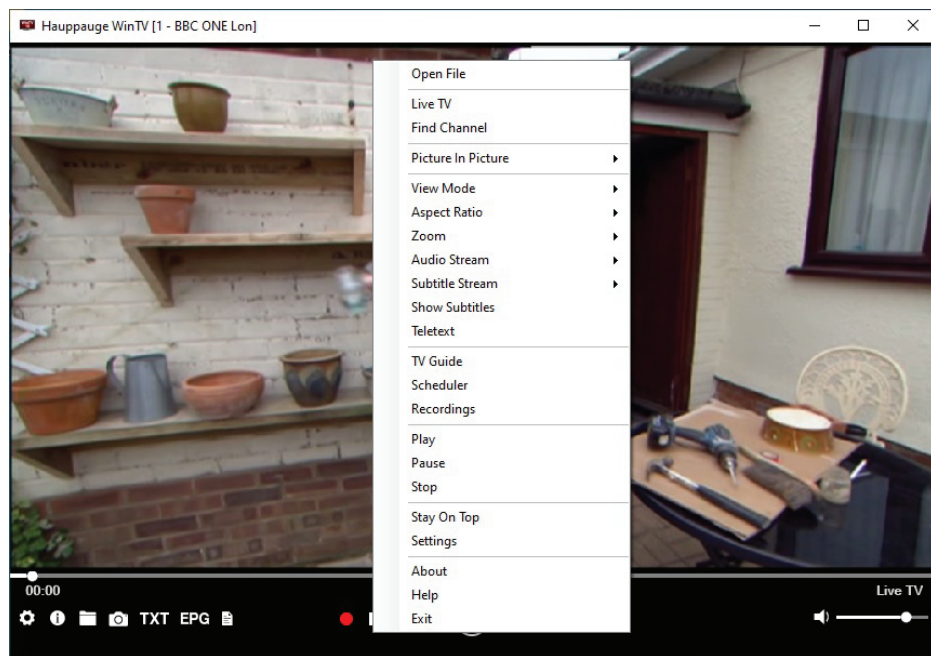
4

5

The WinTV v10 Menu

The Main WinTV Menu (context menu)

Right-click inside the TV window or click on the **menu button** on the WinTV toolbar to display the **Context Menu**. The following options are available.



7

«**Scheduler**» The Scheduler allows you to record a TV program at a certain date and time on the specified channel. It lists all scheduled recordings added by the TV Guide as well as any manual recordings that have been set. From here you can Edit or Cancel (delete) existing schedule entries.

To schedule a new recording, click on the Add button. You will need to select the channel, set the start time, duration etc. and confirm with a click on the Record button.

Note: *The WinTV application does not have to be running for a scheduled recording to work, but your PC will need to be either turned on or in Standby (not Hibernate). All scheduled recordings are performed in the background by the task "WinTVRec.exe". If a recording is started while you are watching live TV, WinTV will display the TV program being recorded.*

«**Settings**» Click the Settings button to open the **WinTV Settings** window.

«**Settings**» **General:** Select the language and the preferred Audio and subtitle languages. You can also specify the video renderer to be used and the TV shape.

«**Settings**» **Capture:** Specify where the recordings, pause files and snapshots will be stored.

«**Settings**» **Devices:** To rescan for TV channels, select the device you wish to configure from the list and click on Tuner Setup.

«**Settings**» **All Channels:** You can enable or disable the listing of channels with the **select box in the first column**. The Context menu allows you to select all channels, to delete the selected channel(s), to watch the selected channel or to display details about the channel.

«**Settings**» **Favorites:** Here you can define groups of your favorite channels.

«**Settings**» **Advanced Options:** From this menu you have options for:

10

«Find Channel»

This brings up the Channel List. Click on a channel entry to select this channel for watching. To filter the channel list, type in a channel name (or a part of the name). Click on the Pin-Button to permanently show the channel list. The channel list will also be displayed if you just enter any character (a - z) in live TV mode.

«Open file»

Open up a TV recording or other video file for playback in the WinTV window.

«Picture in Picture»

There are four ways to use the Dual Tuner function on WinTV-dualHD:

1. Recording up to two overlapping TV programs: you can schedule up to two overlapping TV shows from the TV Guide or manually. Using the dual tuners is automatic as long as you do not schedule more than two overlapping recordings.

2. Watch one live program while another program is being recorded: you can watch one live program in WinTV v10 and continue watching, when a scheduled recording takes place. The free tuner is used automatically for the recording.

3. Watch with Picture-in-Picture: in **Picture in Picture**, click **Two Tuner**. You will now see the WinTV window with a Picture-in-Picture window. to select a channel, in **Picture in Picture** select **Find Channel** and choose your channel.

4. Watch two separate WinTV windows, each with their own TV channel: in **Picture in Picture**, click **Dual Window**. You will now have two completely separate windows, each with their own TV program.

«View Mode»

Normal, No Title and Fullscreen are available. In **Normal** view all control elements and buttons are visible. In the **No Title** view only the TV image is shown. In the

8

Automatically starting TV when WinTV v10 opens

Disable the Now/Next channel information

Disable any On Screen Display graphics

Auto convert the standard .TS recordings to the .mpg format

«Settings» Decoders

The Decoders section allows you to test and use third party video/audio decoders. (The use of third party decoders is an unsupported feature but can help in some situations.)

Troubleshooting

How Can I Rerun the Channel Scan?

To scan for channels again, in the main WinTV window click on the **gear icon** (lower left hand corner of WinTV), then select the **"Devices"** tab, click on the **WinTV-soloHD / WinTV-dualHD** entry and click on **"Tuner Setup"**.

Click **Next** and **Next** to start the channel scan.

A video showing how to do the channel scan can be found here:
www.hauppauge.com/rescan

11

Fullscreen view the TV image fills the whole screen. You can also switch between these views by double clicking inside the TV window, or by pressing <Ctrl> W on the keyboard.

«Audio Stream»

If the current TV broadcast offers more than one audio stream / language, you can select the other stream / language here.

«Show Captions»

Select this option to display **close captions**. If close captions are available, the On Screen Display message "Captions: On" is shown for a few seconds, and close captions are displayed. If close captions are not available, the OSD message does not appear. To turn off close captions, select "Show Captions" again.

Note: *captions are recorded when making a WinTV recording. When playing back a .ts recording, captions can be displayed by selecting Show Captions.*

«Stay On Top»

If enabled, the WinTV application window will remain in view over any other application windows, even if it is not selected. To turn on, select "Stay On Top". To turn off, select this option again.

«TV Guide»

Some DVB-T2 (FreeviewHD) digital TV channels transmit Electronic Program Guide information (EPG). This information is collected and displayed in the TV Guide window. Click a program title with your mouse to see more details about the entry. To record a program, click on Record in the details view. The scheduled recording is added to the Scheduler window. To rescan all frequencies for TV Guide information, click on Update EPG.

9

WinTV Shortcuts

Next Channel = Plus (+)

Previous Channel = Minus (-)

Last channel (the channel you were tuned to previously): Alt P

Increase Volume = Page up

Decrease Volume = Page down

Show Channel List = Ctrl + L

Mute = Ctrl + M

Display Info = Ctrl + O

Stream Details = Ctrl + D

Teletext = Ctrl + T

Pause Video = Ctrl + Q

Play = Ctrl + P

Skip Ahead = Ctrl + F

Skip Back = Ctrl + R

Live (now) = Ctrl + C

Full Screen = Ctrl + W

Subtitles on / off = Ctrl + S

WinTV Settings = Ctrl + I

Start TV = Alt + T

Last Channel = Alt + P

Start Recording = Alt + R

Stop = Alt + S

Open File = Alt + F

Make Snapshot = Space Bar

Change Aspect Ratio = Ctrl +

Exit Full Screen = Esc

12