

WinTV-HVR-2205/2215

Dual hybrid PCI Express Video Recorder for PAL TV or digital DVB-T, DVB-T2 and DVB-C

Quick Installation Guide

Hauppauge Computer Works, Inc. Telephone: 631-434-1600
91 Cabot Court, Hauppauge, NY 11788 USA Tech Support: 631-434-3197

Hauppauge Computer Works, Ltd Telephone: +44 (0)203-405-1717
Crown House, Home Gardens, Dartford, Kent, DA1 1DZ UK

© Hauppauge Computer Works, Inc. 2006-2015

QI-HVR-2205-ENG-V3.3 June 19, 2015

Contents of the WinTV-HVR-2205 package

- **WinTV-HVR-2205 or WinTV-HVR-2215 PCI Express board** with dual hybrid PAL/DVB-T/DVB-T2/DVB-C TV tuners and dual MPEG-2 encoders.
- **A/V breakout cable** for the primary A/V input
- **A/V panel and cable** to add a second set of audio/video inputs (only on some models)
- **Remote control transmitter** and **IR remote control receiver/blaster cable** (on models with remote control)
- **IR transmitter cable** for the A/V input on the A/V panel (on models with remote control)
- **WinTV-HVR Installation CD-ROM** including WinTV v8 application with TV scheduler

Installing the WinTV-HVR-2205

WinTV-HVR-2205 is a PCI Express TV tuner board with two TV tuners which can be used to watch or record two TV programs at the same time. These TV programs can be analog or digital TV, but since there is only one IEC TV connector, it must be the same type of TV for both tuners.

Each analog TV tuner also includes a hardware MPEG-2 encoder, so that your computer does not slow down when watching or recording analog TV channels.

WinTV-HVR-2205 is designed for **Windows 10, 8, 7 and Vista**. It can be used with Windows Media Center or Hauppauge's WinTV v8 application.

Note: if you are running the Windows Media Center application, you only need to install the **WinTV-HVR Windows device driver**. You do not need to install the Hauppauge WinTV applications. But if you are using Windows Media Center and want to use the on board Media Center compatible receiver transmitter, you also need to run the **Hauppauge CIR config tool** and select **Hauppauge WinTV-HVR-2205**. See below in the section entitled "**Configuring the IR Blaster**".

Installation overview

- ✓ Plug the **WinTV-HVR-2205** board in a PCI Express slot in your PC.

- ✓ Connect a TV source.
- ✓ On models supplied with the Media Center remote control, plug the **IR remote control receiver/blaster cable** into the **Remote control connector**. Position the **IR receiver/learn sensor** where infra-red light from the **remote control transmitter** can hit it.
- ✓ **Optional:** Install the A/V panel in another slot in your PC, and connect the supplied cable to the WinTV-HVR-2205 connector.
- ✓ Boot into Windows. Install WinTV-HVR Windows device driver from the **WinTV-HVR-2205 Installation CD-ROM**.
- ✓ **Optional:** After the Windows driver is installed, install the **WinTV applications** from the **WinTV-HVR-2205 Installation CD-ROM**.

Install the WinTV-HVR-2205 board and connect the cables

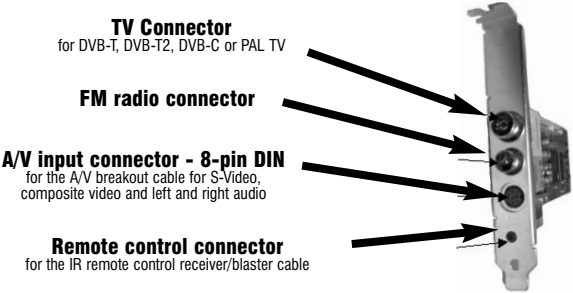
Turn the power off on your PC. Plug the WinTV-HVR-2205 into a PCI Express slot (X1 or X16).

TV connection

Plug your **DVB-T** or **DVB-T2** digital TV antenna, or **DVB-C** digital cable TV or **PAL TV** cable into the **TV Connector**. Plug an FM antenna into the **FM radio connector** if desired.

A/V breakout cable - 8-pin DIN connector

The **A/V breakout cable** can be used to bring audio/video from a satel-



lite TV or cable set top box. Plug the A/V breakout cable into the **A/V input connector**.

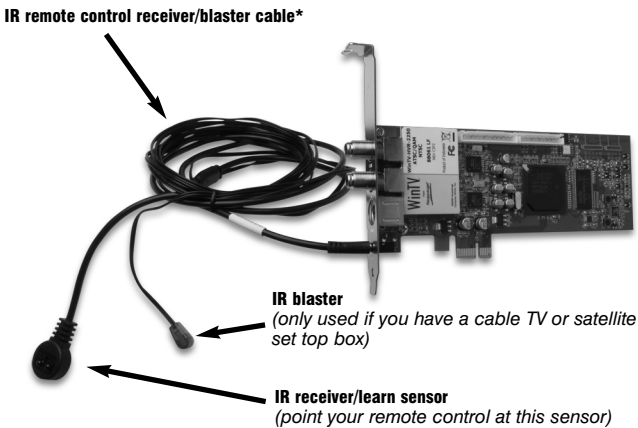
If you are using a cable TV or satellite TV set top box Connect the **set top box** to the WinTV-HVR-2205 through either **Component (480 p/i or 576 p/i)**, **Composite video input** or **S-video input** on the WinTV board. You can also connect a coax cable from the **RF Out** on your set top box to the **TV connector** on the **A/V breakout cable**.

Installing the IR remote control receiver/blaster (on models supplied with remote control)

On models supplied with the Hauppauge Media Center compatible remote control, the **IR remote control receiver/blaster cable** is plugged into the **Remote control connector**. Add the supplied **batteries** to the **Remote control transmitter**.

Note: the Hauppauge remote control can also be used with the Hauppauge WinTV v8 application. See instructions below to configure the remote control for Hauppauge's WinTV application.

Note: The use of the IR Blaster is optional. It is only needed if



you have a cable TV or satellite set top box and want Media Center or WinTV v8 to change the channels on your set top box. If you are not using a set top box, you should still connect the IR remote control receiver/blaster cable, **but you will only use the IR receiver sensor**.

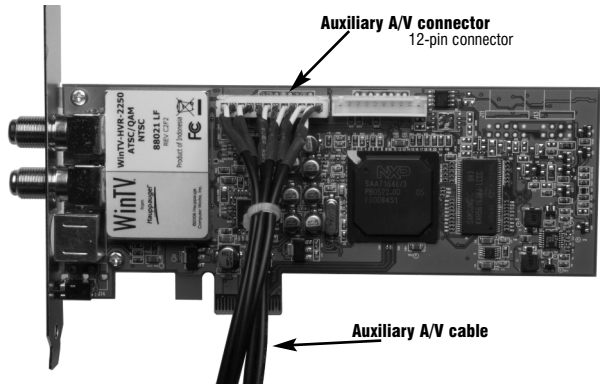
The **IR remote control receiver/blaster cable** has two ends: the **IR receiver/learn sensor** and the **IR blaster**:

- Position the **IR receiver/learn sensor** in a spot on your PC where it will be able to receive infra-red commands from the **Media Center remote control device**. Use the Velcro dot (on the back of the IR receiver) to position the **IR receiver and learn sensor**.
- **Optional:** position the **IR blaster** on your cable TV or satellite set top box. Infrared light from the IR blaster needs to hit the remote control receiver in your set top box.

To test the IR Remote control receiver, click the **Start button** in the middle of the remote control. Windows Media Center should open.

Install the auxiliary A/V panel

The **A/V panel and cable** can add a second set of audio/video inputs to the WinTV-HVR-2205. Install the **Auxiliary A/V panel** in a slot on the back of your PC. Plug the cable into the 12 pin **Auxiliary A/V connector** on the WinTV-HVR-2205.



Install WinTV-HVR-2205 software

Turn on your PC, and boot into Windows.

If a 'Found New Hardware' wizard appears, please cancel it and allow windows to load fully before proceeding.

Insert the **WinTV Installation CD-ROM** in your PC's CD-ROM drive.

Note: if the CD does not autorun, navigate to the CD and run the 'Setup.exe' file.



"**Hauppauge WinTV Installation CD-ROM**" window will appear on the screen.

Install the WinTV driver

Click the button labeled **Step 1: Install Drivers**.

A blue screen will open and begin installing the drivers for your WinTV.

Once the drivers have installed, click on the **Finish bar** to exit.

If you are using Windows Media Center and want to use the Hauppauge remote control with Media Center:

Go to the **WinTV v8 installation CD** in the **MISC** folder and run **HCWCIRConfig_Tool.exe**

Put a check in the box labeled "**Hauppauge WinTV-HVR-2205**". Click **OK** to save the changes.

Note: your computer must be restarted for the changes to take effect.

Install the WinTV applications (optional: not needed if you are using Windows Media Center)

Click the button labeled **Step 2: Install WinTV**

The setup application will then open and begin automatically installing the WinTV application components. Once complete, click **OK** then **Exit**.

Note: the latest driver updates are available at: www.hauppauge.com

Running WinTV v8 for the first time

To run the **WinTV v8 application** for watching TV, recording videos and playing them back on your PC, **double click on the WinTV icon** on your Windows desk top.

When you run WinTV for the first time, the **WinTV Device Setup Wizard** appears. Select the TV source that you are using. On some model WinTVs, you have multiple tuners and therefore you can select multiple sources. For the WinTV-HVR-2205, you can chose either DVB-T/DVB-T2 or DVB-C Digital and Analog TV. You cannot chose both DVB-T/DVB-T2 and DVB-C at the same time.

Digital over-the-air TV

Select **DVB-T** and click **Next**. In the **DVB-T Setup menu**, click **Next**. You will see the **Digital Scan** scanning for digital over-the-air channels.

The digital TV scanning process will scan from channels 2 to 51. As TV channels are found, they will appear in the **Channel box**.

When complete, click **Next / Next** and **OK**.

Note: if you do not receive any digital TV channels, an Antenna signal booster might be needed. After adding a signal booster, see below for instructions on rescanning and the Troubleshooting section for information on choosing an antenna.

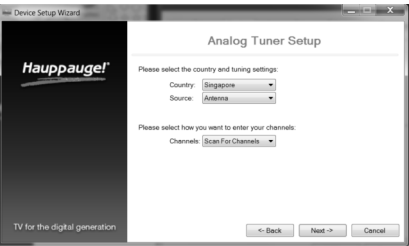
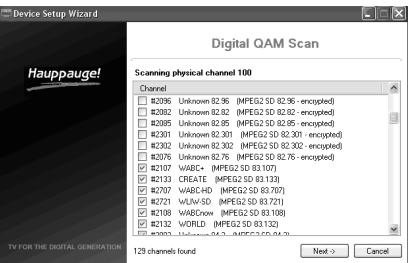
DVB-C Digital Cable TV

DVB-C digital cable TV channels are those TV channels broadcast on a digital cable network which are unencrypted ('free to view'). If you have a cable operator who transmits DVB-C digital TV programs, chose **Digital DVB-C** and **Next**.

Encrypted channels are automatically not selected. The resulting channels in the list might be both standard and high definition channels.

Analog cable TV

Select your **Country** and your **TV Source** from the drop down list. To automatically scan for channels, click **Next** to continue.



Note: If you'd like to use the A/V inputs, please select External Inputs.

Click the **Scan** button and WinTV will automatically scan for analog channels. The scanning process takes about 10 minutes.

External audio/video sources

You can bring video into the WinTV from an external audio/video source such as a cable TV or satellite set top box.

In the Device Setup Wizard, select **External Inputs** and click **Next**.

You will be presented with the option to add a **Composite** and an **S-Video Input**. Please select your country (if not correct) and click **Next**.

If you wish to connect a source not normally designed for operation in your country, you can configure the Video Format manually from the drop down list. Change the value from "AUTO".

Note: Pal BGHIDK is the commonly used format in Europe. NTSC is the broadcast format used in North America.

Rescanning TV channels

If you want to rescan for TV channels, click the **Setup menu (Gear button)** in the lower left corner of WinTV v8).

Then click on the **Devices tab**. Chose your WinTV device by clicking on it, then click **Tuner setup**. Chose the TV format you want to scan, then click **Next**. Click **Next** and a new scan will be started. When the scan is complete, click **Next / Next** and **OK**.

Using the WinTV v8 application

To watch TV, click the **Watch TV** button.

To see the **TV Channel list**, click your **right mouse button** in the TV window and select **Find Channel**.

Options menu

The Options menu is the main menu where you can select channels, turn on closed captions, open the TV Scheduler and many other of the most important TV control functions.

To bring up the **Options Menu**, click your **right mouse button** once in the TV window .

To see the **channel list**, click on **Find channel**. You will see the list of channels which have been scanned.

To show the **Channel menu as part of the TV window**, click the **Channel list always on** icon at the top of the channel list.

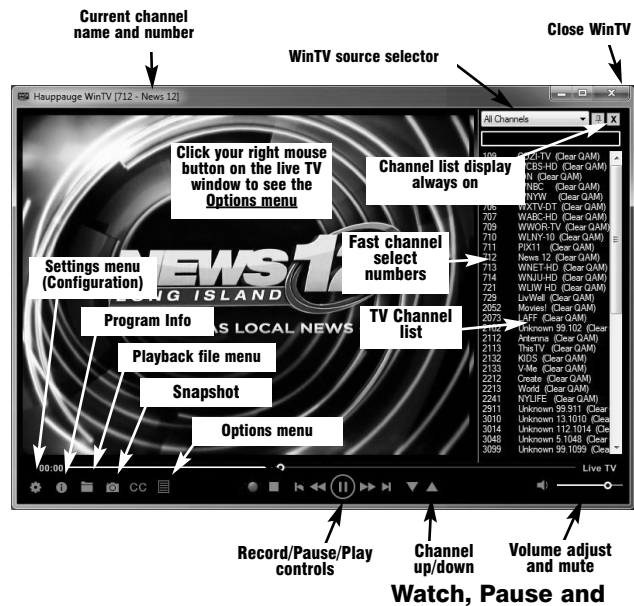
To turn on **Closed captions**, click on **Show Captions**.

To manually schedule a **TV recording**, or to see which programs have been scheduled, click on **Scheduler**.

To turn on the **Always on Top mode**, click on **Stay on Top**.

IR blaster in WinTV v8

If you would like to use the Hauppauge IR blaster to change the channels on your cable TV or satellite set top box, see the section entitled "Configuring the IR blaster so WinTV v8 can control your set top box".



Record TV in WinTV v8

WinTV v8 is always recording video to your PC’s hard drive while TV is being displayed. In this way, you can immediately skip back and replay the TV program you are watching.

Clicking on the **Pause button** will cause the video to pause, while clicking the **Record button** will cause the current TV program to be recorded to hard disk.

Recording your TV shows

If you want to record a TV show you are watching:

- Click the **Record button**. The recorded file name will popup on the video for a few seconds as the recording starts.
- When you are finished recording, click the **Stop button**.
- Click the **Playback file button** and select the last file recorded to play the video you just recorded
- To play a video you recorded earlier, click the **Playback File button** and then move your mouse and click once on the video you want to play. Click **Open** and the file will start playing.

The recorded video file is saved in the directory set in **Recordings directory**. The default directory is **MyVideos**. To change this directory, click the **Settings button** and then the **Folders tab**. Every time you record a file, a new file is automatically created. The file will be formatted as **(ChannelNumber)_(ChannelName)YearMonthDay_Time**.

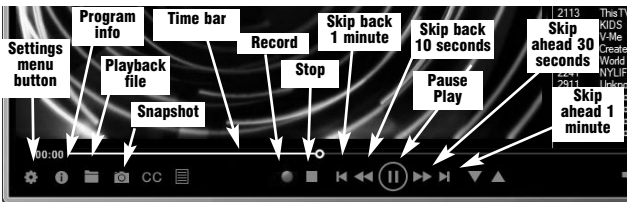
For digital TV programs, the quality level recorded is the same as it is transmitted by the TV station. For example, if the TV station is transmitting a high-definition program, WinTV will record the program in high-definition.

Closed captions, parental control information and SAP audio is recorded with digital TV programs.

For analog cable TV using the built-in hardware MPEG-2 encoder, the quality of the video recording is set to 6Mbps/sec. This will be a configurable setting in a future version of WinTV v8.

If you want to pause a TV show you are watching:

- Click the **Pause** button. Your TV video will stop and the Time counter will start counting.



- To start the video from where you paused, click the **Play button**
- To rewind the video to the beginning, click the **Skip to the beginning button**. If your video was paused, click the **Play** button.
- To rewind the video 10 seconds, click the **rewind 10 seconds button**. If your video was paused, click the **Play** button.

The **Delay counter** displays how much time you are behind the live video. For example, if the delay counter says 00:01:23, then the video window is showing video 1 minute and 23 seconds behind live video.

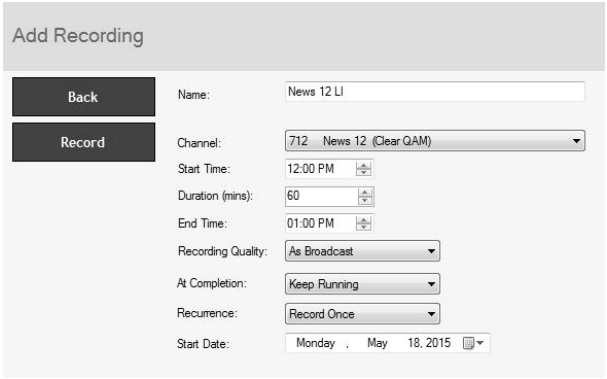
TV Scheduler

WinTV v8’s built-in TV Scheduler allows you to schedule the recording of TV shows. Once a record event is set, WinTV v8 can be closed and will “wake up” at the desired time and tuned to the desired channel.

Note: your PC needs to be turned on for scheduled recording to work.

When a scheduled record event takes place, the WinTV v8 application records “in background” so that you can continue to watch your live TV program, even as the recording progresses.

The TV Scheduler can be found in the **WinTV v8 Options menu**. **Right click** your mouse button in the TV window to see the Options menu. Click **Scheduler**. To set up an event for timed



watching or recording, click the **Add button**.

The items that need to be set for each event are:

- **Name:** you can add a name to the recording. If you do not enter a name, the name will be in the channel/date format.
- **Channel:** chose one of your scanned channels.
- **Start time:** set to the desired start time. Click on the hour to set the hour, the minute to set the minute. Note: It takes about 15 seconds to launch the WinTV and start recording.
- **Duration:** number of minutes in the recorded program.

Configuring the IR blaster

The **IR Configuration Utility** is used to configure the WinTV-HVR’s built-in remote control IR blaster for use with either WinTV v8 or Windows Media Center.

Note: the WinTV-HVR-2205 board is initially configured for it’s on-board remote control to be used with WinTV v8. If you want to use the built-in remote control with Windows Media Center, you must run the IR Configuration Utility.

To run the **IR Configuration Utility**, go to the WinTV program group and click on **HCWCIRConfig_Tool.exe** (this file can also be found on the Hauppauge website at: http://hauppauge.lightpath.net/software/utlils/hcwcirconfig_tool_1.2.2.8165.exe



You will see the dialog box **Configure Hauppauge Remote Control Receivers**. If the WinTV-HVR-2205 contains the only IR receiver in your PC, you will see a message **One Media Center remote control has been detected**.

To configure as a **Windows Media Center remote control**, put a check in the box labeled “Hauppauge WinTV-HVR-2205”.

To configure the **IR blaster for use with WinTV v8 remote control**, remove the check from the box labeled “Hauppauge WinTV-HVR-2205”. Click **OK** to save the changes.

Note: your computer must be restarted for the changes to take effect.

Learning the remote control codes in WinTV v8 for your set top box

In WinTV v8, the **IR RemoteBlaster** lets the WinTV-HVR board change the channel on a satellite or cable TV set top box by transmitting ‘channel change’ commands to the box via an Infra Red (IR) transmitter.

Note: You will need the remote control from your set top box to complete the configuration in this section.

Note: this procedure is only necessary if you are using WinTV v8. If you are using Windows Media Center, it will configure the IR blaster as part of the Media Center setup.

The **Hauppauge IR RemoteBlaster** consists of two components:

1. **IR Blaster cable.** This cable has an IR cable jack and an IR transmitter. The IR cable jack plugs into the back of the WinTV board, and the IR transmitter needs to be positioned over the IR receiver on your set top box using the self stick tape supplied on the front of the transmitter.
2. **IR Blaster Configuration program (BlastCfg.EXE)** for configuring the codes for the IR transmitter.

During the installation of the WinTV applications from the Installation CD-ROM, the Hauppauge IR Blaster applications will be automatically installed.

- **Recurrence:** one time, daily, weekly. Note: If you set for Record Weekly, you must also specify the Day of the Week for the recording.
- **Date to Begin Program:** today’s date is the default. Change this if you want to schedule on another date.
- Source selection: leave set at WinTV to bring up the WinTV at the requested time and on the requested channel.

Once these are set, click **OK**. You can add more recordings, clicking OK after each event is set.

When you are finished click **Close**.

The WinTV program does not have to be running for the Scheduler to work, but your PC needs to be turned on. If WinTV is not running, it takes about 15 seconds to start WinTV and to start the recording of TV.

TV Tuner set up in Windows Media Center

Note: Media Center requires Windows 8 or 7. You can also use the Hauppauge WinTV v8 application.

Run the Windows Media Center application.

Cursor down to **Tasks**. Cursor left to **Settings**. Click **Enter**.

Cursor down to **TV**. Click **Enter**.

Cursor down to **Set up TV Signal**. Click **Enter**. Click **Next**.

In **Confirm your Region**, make sure your region is selected. Click **Next**.

You will see a message which says **Download TV Setup options**. This takes about 5 minutes to complete.

Click **Next** when this download is complete.

At **TV Signal**, click **I will configure my TV signal manually** and click **Next**

You will then see: **Cable / Satellite / Antenna**. Chose the source of your TV signal (Cable for use with analog cable TV, Satellite for use with a satellite set top box and Antenna for use with DVB-T or DVB-T2 digital over the air TV) and click **Next**.

At this point, Media Center will set up the TV tuner. This might take a minute or so.

You will then see a message saying **Examining cable TV, antenna or set top box connection**.

After determining the type of signal, you will see **You are Done!**

Note: If you see a message “IR hardware not detected”, and you are only using one TV tuner, then you need to tell Media Center to use only Tuner 1.

Click through the rest of the settings, set up your **Guide listings** and click **Finish**.

Then return to the main menu. Go to **TV + Movies** and then **Live TV** to watch and record TV.

Hauppauge lab used 50% of the CPU for playing ATSC 640i format.

In some cases, either a faster processor or more graphics memory might be required. Slow or jerky video and a noisy TV picture indicate system performance problems.

Jerky video with live over-the-air digital TV

Jerky or distorted video can be caused by two things in your PC or laptop: a slow CPU which cannot decode the DVB-T or DVB-T2 TV signal fast enough, and a graphics system which cannot keep up with the high datarates of high definition DVB-T2 TV.

Many times, improving the performance of the graphics display will fix the jerky video display of digital TV. Here are some tips on improving graphics performance:

- Use the latest graphics driver: graphics drivers are often ‘tweaked’ to improve performance, especially the built-in graphics on laptops. Check the Microsoft Windows update site to download the latest graphics driver for your computer. For Dell computers, check the Dell website for the latest graphics driver.
- In the WinTV v8 Settings menu (click the “gear” icon), in the **General tab** change the **Video Renderer**. This is used to change the display mode of a graphics card for TV watching. This does not affect any other Windows program. The default mode used by WinTV is **EVR**. **EVR** uses your graphics card to move the digital TV image into the graphics memory. If you chose **Overlay**, the processor moves the TV signal into the graphics memory. It is more CPU intensive but often fixes display problems on some laptops.

To use hardware graphics acceleration, click **VMR7**, **VMR9** or **EVR**.

Note: hardware acceleration does not work on all systems.

Note: if you have an nVidia graphics card, you can use VMR7.

If this setting does not help, or if you experience WinTV not responding after a channel change, then your graphics system cannot use hardware graphics acceleration.

In this case, run click ‘Overlay’ then rerun WinTV.

Only some channels are found during over-the-air channel scan

If you are only receiving some known TV channels when scanning, it means your TV antenna is not adequate to pick up the channel. You will need either an antenna signal booster (an antenna amplifier will work) or a high gain antenna.

Also, in some areas using cable TV, a format called Cable HRC is used. If so, try rescanning but use CABLE (HRC) instead of cable in the Broadcast/Cable box.

Black window when selecting an digital TV channel

A black window when selecting a digital channel means that the WinTV-HVR-2205 is not getting a good TV signal. This is most often due to poor reception. If the signal is very bad (or non existent), you will see a message “No Signal” pop up in your WinTV v8 window. See “Only some channels are found during digital channel scan” above.

Uninstalling the WinTV driver and applications

Run the hcwclear.exe from the installation CD. Select OK A black screen will briefly appear and once it has disappeared the software will be removed. If you now re-start the computer you will be at Step 4 of the installation.

FCC Statement

Radio Interference Statement: The WinTV products have been tested and found to comply with the limits for a Class B digital device, pursuant to part 15 of the FCC Rules. These limits are designed to provide reasonable protection against harmful interference in a residential installation. This equipment generates, uses, and can radiate radio frequency energy and cause harmful interference to radio communications.